

**PARTS
SPECIALIZE
FOR
PANDA EXPRESS**



Shops online: ***www.pandapartstore.com***



Atlanta Culinary Equipment Inc

1858 Meca Way
Norcross, GA 30093

Tel: 770-908-3838
Fax: 770-938-3878

® www.atlequipment.com info@atlequipment.com



3176427



FRONT SERVICES COUNTER AREA
PAGE: 2



BEVERAGE STATION AREA
PAGE: 4



MANAGER STATION AREA
PAGE: 5



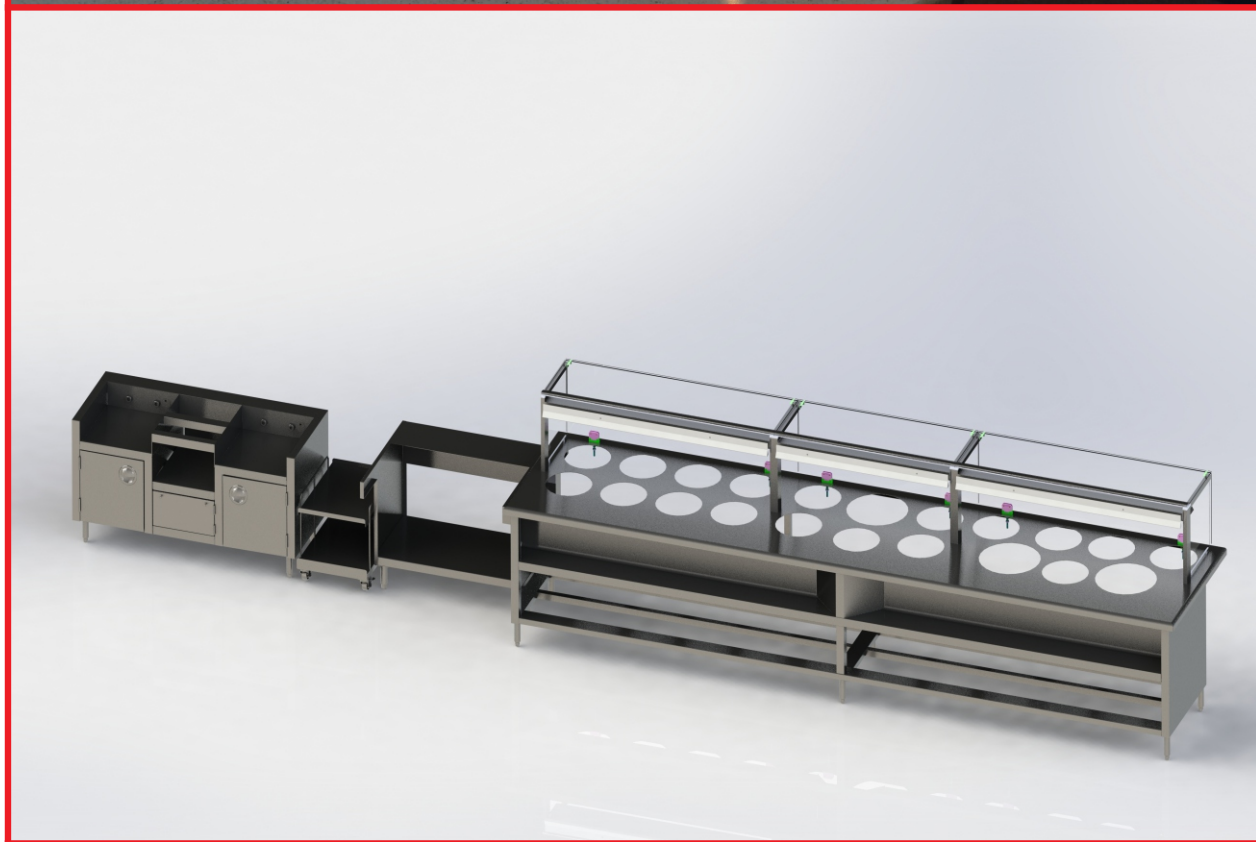
DRIVE THRU COUNTERS AREA
PAGE: 7

INSIDE KITCHEN AREA
PAGE: 9-10



COOKING LINE AREA
PAGE: 12-14



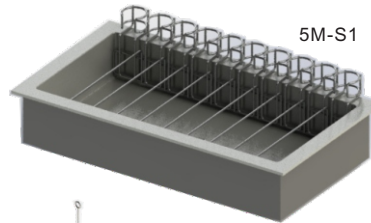




46G - Food Tray Cart
(Unit Weight: 31lbs*Ship via Freight only)



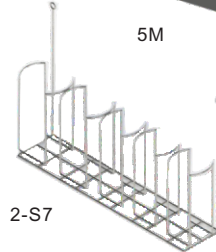
46B - Rice Warmer Stand
(Unit Weight: 66lbs*Ship via Freight only)



5M-S1



2-S4



5M

5M - Ice Bin
(Unit Weight: 44lbs*Ship via Freight only)

5M-S1 - Bottle Display Rack
(Unit Weight: 6lbs)

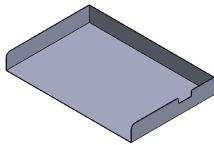
2-S4-Plastic Card Holder

2-S7-Wire Lid Holder, S/S

2-S7



F2-S6 - Rice Warmer Divider



PA-TRYKB - Teriyaki Cutting Board Holder



1M-SGH
Sneeze Guard Hinge(for rectangle glass)
1 lb

1M-H100N- Hydraulic Cylinder 100N(for rectangle glass)
1M-H200N- Hydraulic Cylinder 200N(for curve glass 3pan)
1M-H300N- Hydraulic Cylinder 300N(for curve glass 4pan)



1M-SGC
Sneeze Guard Glass Clip(for rectangle glass)



1M-SGPF
Front Services Counter,
Sneeze Guard Post Fastener



1M-AGSR
Front Services Counter,
Aluminum Glass Clamp Bar Support Rubber



1M-TGSR
Front Services Counter, Top Glass Stopper Rubber



1M-GLT3
Top Glass 1/4" for 3pan Section. 16 lbs



1M-GLT4
Top Glass 1/4" for 4pan Section. 21 lbs
1M-GLF3
Front Glass 3/8" for 3pan Section. 27 lbs
1M-GLF4
Front Glass 3/8" for 4pan Section. 35 lbs



1M-GLFS
Front Side Glass Left or Right 1/4". 5 lbs



1M-GLRE
Rear End Glass 1/4" for Between Counter and Ice Bin
2 lbs



1M-SCHL3
Service Counter Heat Lamp for 3pan section. 11 lbs

1M-SCHL4
Service Counter Heat Lamp for 4pan section. 14 lbs

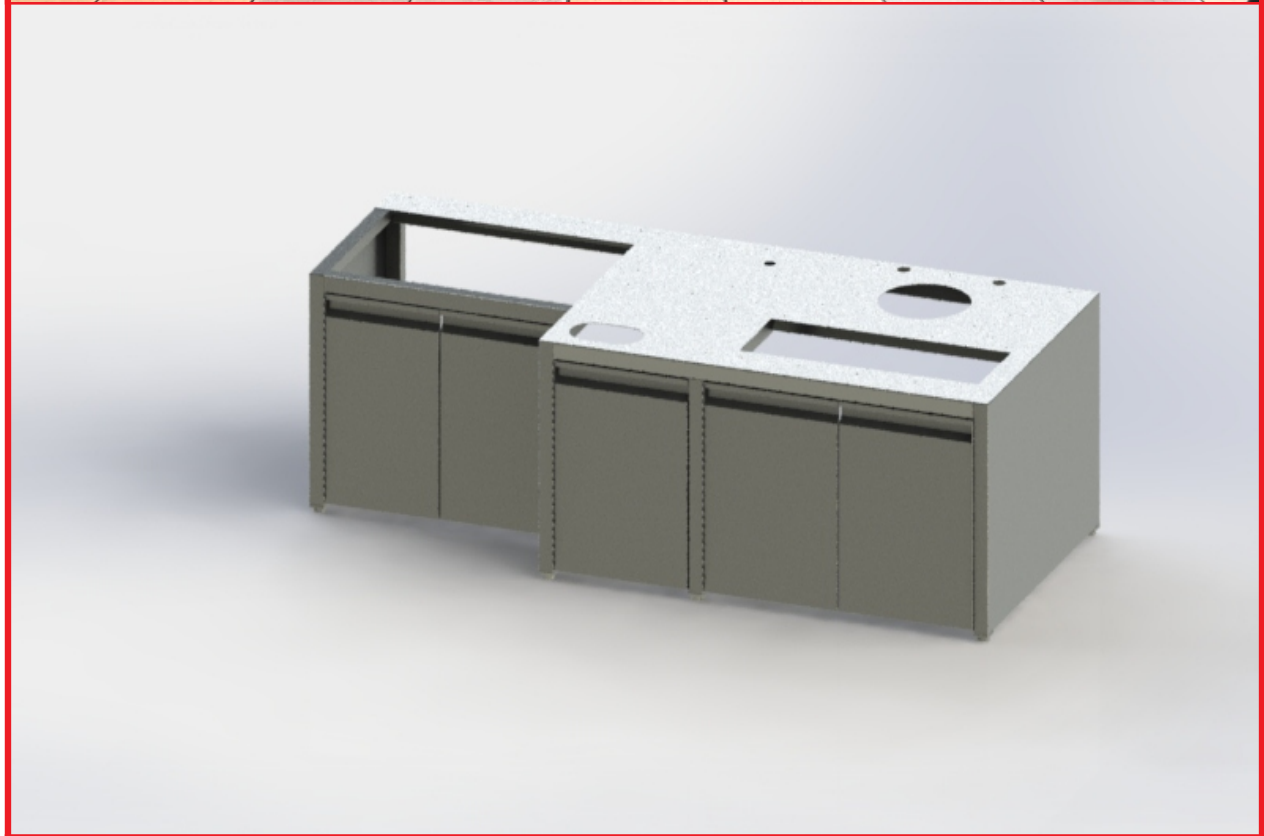


1M-SCCH
Service Counter Ceramic Heater. 110V150W



1M-TGBR
Service Counter To Go Box Rack

1M-TGBR-RKIT
Service Counter To Go Box Rack Retrofit Kit
(for Drop Down Edge Version. Made by GRE)

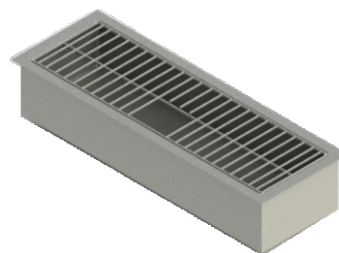




F2-S2 - Trash Can, S/S Round



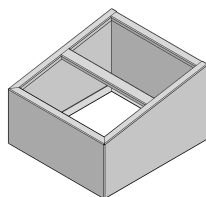
F2-S3 - Scrap Chute 6" S/S



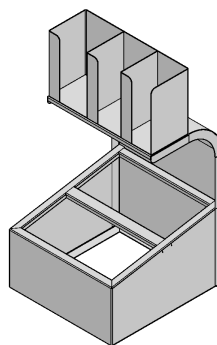
F2-S4 - Soda Drip Holder, S/S



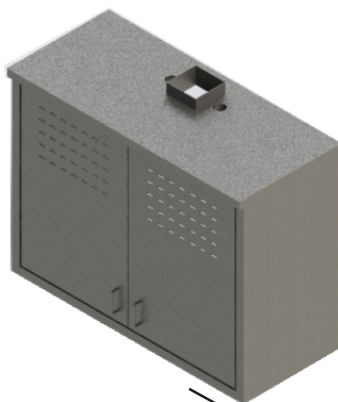
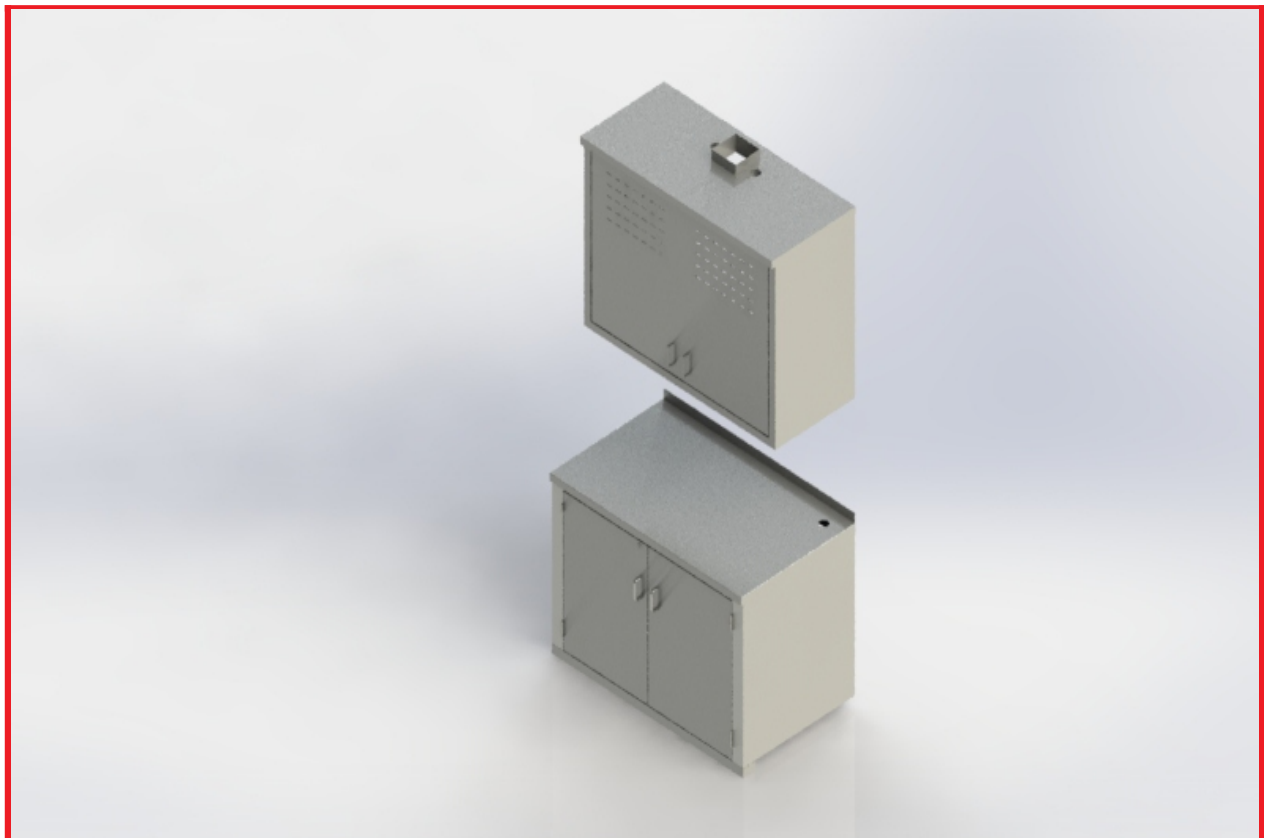
F2-S7 - Utensil Container Divider
(6-1/2" Container)



PA-CBOXS
Utensils Organizer, S/S



PA-CBOXC
Utensils and Lid Organizer, S/S



49A - HIS
Manager Station Hinges, S/S



49A - Manager Station, 48\"/>



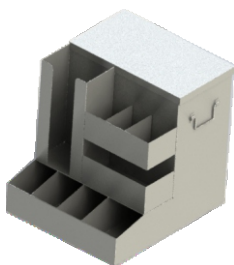
49A - UE
Manager Station, 48\"/>

49A - BS
Manager Station, 48\"/>



49A - PH
Manager Station Pull Handles, S/S

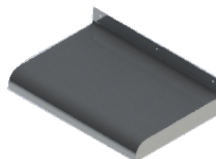




47C
Drive Through Condiment Dispenser



6F-SG
Hot Well Counter Splash



6F-WS
Hot Well Counter Window Shelf



1M-SCHL3
Service Counter Heat Lamp for 3pan section
1M-SCHL4
Service Counter Heat Lamp for 4pan section



1M-SCCH
Service Counter Ceramic Heater. 110V150W





40A
Pot Sink, PS100
(Faucets NOT INCLUDED)
(Unit Weight: 176 lbs*Ship via Freight only)



41B
Vegetable Sink, VS42L-Left Splash
(Faucets NOT INCLUDED)
(Unit Weight: 77 lbs*Ship via Freight only)

41C
Vegetable Sink, VS42R-Right Splash
(Faucets NOT INCLUDED)
(Unit Weight: 86 lbs*Ship via Freight only)



FISHER-13269
8" Backsplash Control Valve,
Lever Handles, 12" Swing Spout



FISHER-STEAM KIT

54510 Left Hand Check Valve HOT

74307 Right Hand Check Valve COLD



43AB-41BC
Stainless Steel Wall Shelf, 96" Vegetable Sink
12x96 and 16x96
12x96 (Unit Weight: 30 lbs*Ship via Freight only)
16x96 (Unit Weight: 38 lbs*Ship via Freight only)



46F
S/S Landing Cart, 26x18
(Unit Weight: 33 lbs*Ship via Freight only)

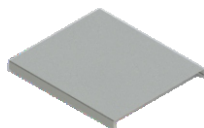


46P
2-Tier Wok Pan Cart



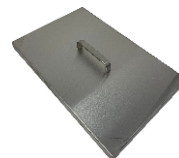
ACE-PA-RING-WPC
Ring Adapter for ladle holder
hang on 2-Tier Wok Pan Cart

*Ring adapter only. Cart, Pan and all others are not included

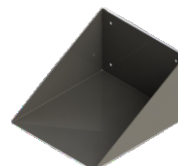


55-S1
Microwave Plate for Wire Shelf 21x18, S/S

55-S2
Microwave Plate for Wire Shelf 24x18, S/S



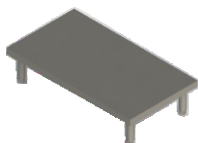
92-IBC
SS Ingredient bin cover (15 x 9-1/2 x 1)



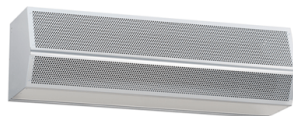
SS-01
Sanitizer Bucket Shelf, S/S



46N
S/S Stand, 18x30x30
(Unit Weight: 41lbs*Ship via Freight only)



46E
S/S Stand, 33x18x8
(Unit Weight: 22lbs)



M8D36
Fly Fan 36"
M8D42
Fly Fan 42"



M8DSW
Door Switch for Fly Fan



M8D36F
Fly Fan Filter 36"
M8D42F
Fly Fan Filter 42"



AA-203G
Knee Action Valve For Hand Sink

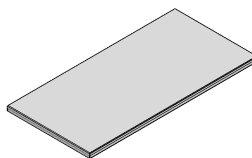
AA-907G
Valve Repair Kit



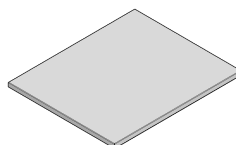
AA-303G
Twist Handle Operated Waste Drain w/2" Outlet



AA-300BR
Twist Handle Waste Drain Bracket



PA-CBC
S/S Chemical Bin Cover
17"x35"x1"



PA-OTC
S/S Oil Tank Cover
31-1/4"x26-1/4"x1"





48A (Unit Weight: 37lbs*Ship via Freight only)
Sauce Cart, 23x26x37



48A-S1
Shaker Holder



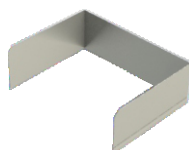
PA-SCR
Sauce Cart Extension Rack



46A (Unit Weight: 64lbs*Ship via Freight only)
Rice Cooker Stand with Dolly, 24x30x28



46A-RC
Rice Cooker Cart / Dolly Only



23B-S1-24
Stainless Steel Splashguard, 24" Griddle



23B-S1-36
Stainless Steel Splashguard, 36" Griddle

46K-S24 (Unit Weight: 57 lbs*Ship via Freight only)
S/S Stand, 24x33x32 (24" Griddle)

46K-S36 (Unit Weight: 74 lbs*Ship via Freight only)
S/S Stand, 36x33x32 (36" Griddle)



WR-JBR23
23Tip Jet Burner
100,000.00BTU/HR



WR-JBR32
32Tip Jet Burner
160,000.00BTU/HR



WR-RB3-SIV
3 Ring Burner (42" Wok Station)
90,000.00BTU/HR



WR-RB2-SIV
2 Ring Burner (Water Pot)
35,000.00BTU/HR



WR-GV
Gas Valve



WR-GVH
Gas Valve Handle



WR-PTC34
Pilot Tubing 34"



WR-PVE
Gas Pilot Valve



WR-MOV
Main Gas ON/OFF Valve



WR-VK3
3Ring Burner Valve & Pipe Kit



WR-VK2
2Ring Burner Valve & Pipe Kit



WR-HLV
HI-LOW ON/OFF Gas Valve



WR-HLVH
Handle for HI-LOW ON/OFF Gas Valve



WR-SVK
Support for Ring Burner Valve & Pipe Kit



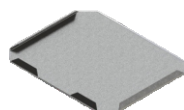
FISHER-58998
Chinese Wok Range Faucet
W/14" Swing Spout



FISHER-3526
4"C/C Deck Mount Faucet
(For Island Sink-7F)



WR-WAVA12
Wok Range Water ON/OFF Ball Valve
1/2" Pipe



SS-02
Scale Holder S/S

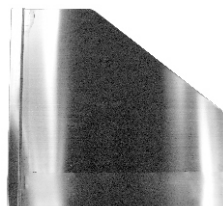


SS-P10
Oil Pan Holder for Larger Wok

SS-P08
Oil Pan Holder for 42" Wok



SS-FM45C
Fryer Connecting Strip. Frymaster 45



SS-SP18L
Chinese Wok Range Side Splash Guard
18x18-Left Side

SS-SP18R
Chinese Wok Range Side Splash Guard
18x18-Right Side



WR-SGV
Chinese Wok Range Safety Pilot Valve



WR-PSK
Safety Pilot Assembly Kit



WR-PST
Safety Pilot Thermocouple Kit



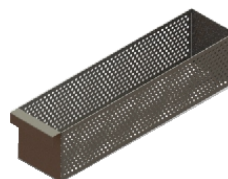
WR-PGT
Safety Pilot Aluminum Tubing



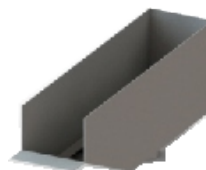
WR-REG34
Gas Regulator 3/4" pipe



WR-REG150
Gas Regulator 1-1/2" pipe



WR-TBR622K
Wok Range Trash Basket Only



WR-TBR622B
Wok Range Trash Basket BASE Only
2" Drain

Chinese Wok Range Drip Pan

ACE-TP16G
Wok Range Drip Pan 17-1/2x32 Galv

ACE-TP18G
Wok Range Drip Pan 19-1/2x32 Galv

ACE-TP22G
Wok Range Drip Pan 23-1/2x32 Galv



Chinese Wok Range Opening Metal Ring

ACE-R1511 (Unit Weight: 15lbs)
Wok Range Opening Metal Ring for 16" Opening

ACE-R1713 (Unit Weight: 20lbs)
Wok Range Opening Metal Ring for 18" Opening

ACE-R2113 (Unit Weight: 22lbs)
Wok Range Opening Metal Ring for 22" Opening



*Other Size and Material are Available for Order



WR-WDRU16 (Unit Weight: 47lbs*Ship via Freight only)
Waterless Drum Unit for 16" Opening

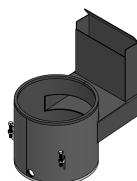
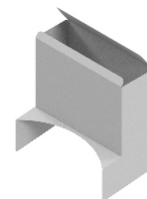
WR-WDRU18 (Unit Weight: 61lbs*Ship via Freight only)
Waterless Drum Unit for 18" Opening

WR-WDRU22 (Unit Weight: 73lbs*Ship via Freight only)
Waterless Drum Unit for 22" Opening
(42" Wok Station)

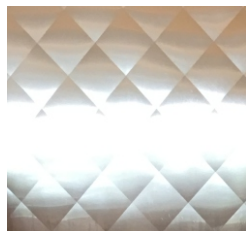


20-S18 (Unit Weight: 19lbs)
S/S Water Pot, Modified for Air Gap 12x18x8

WR-AGEX-COVER
S.S Cover only for
Air Gap Exhaust Base



WR-AGEX (Unit Weight: 66lbs*Ship via Freight only)
Air Gap Exhaust Base for Water Pot
With out S.S Cover



B1A1
S/S Panel Diamond Pattern Finish, 6'6"H
48"W. 304/22GA
NET Weight: 33 Lbs/ea



B1B1
S/S Panel Brush #4 Finish, CUSTOM"H"
48"W. 304/22GA
NET Weight: 32 Lbs/ea



B1D1
S/S "H" Connector for Panel 10'-0"H



B1D2
S/S "C" Cap for Panel 10'-0"H



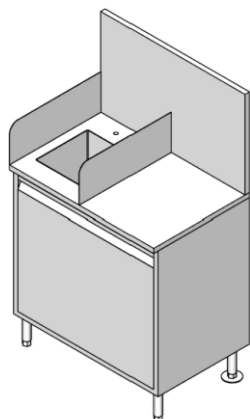
B1H
S/S "Z" Channel for Wall base



20Q
Chow Mein Wok Station 42" w/Accessories
Included: AA Faucets x1 and Gas Regulator

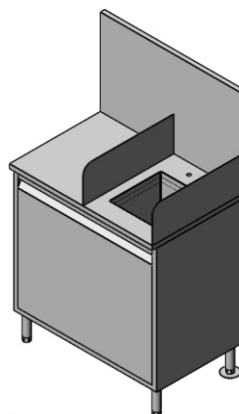


20A
Large Wok Station 96" w/Accessories
Included: AA Faucets x2 and Gas Regulator



7F
Island Sink
Sink on Left
Flange Feet on Rear
*Faucet and Strainer are not included

Ship Via Freight Only!!!
Net Weight: 116Lbs/ea



7F
Island Sink
Sink on Right
Flange Feet on Rear
*Faucet and Strainer are not included

Ship Via Freight Only!!!
Net Weight: 116Lbs/ea